

ProMetall Design instead of average

Pro*Metall*

Experience metal –

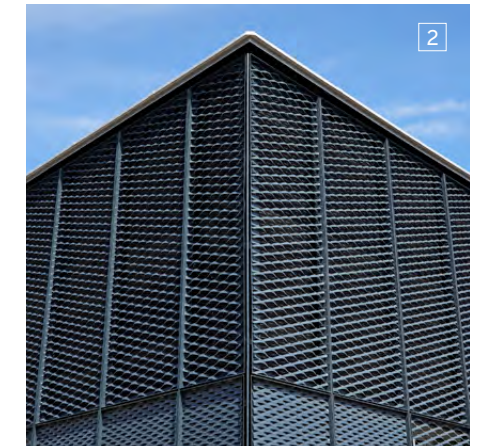
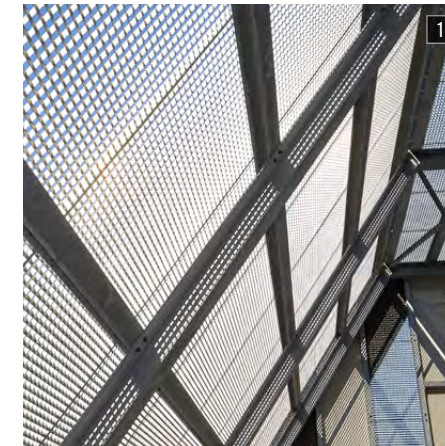
Experience metal - your
Austrian supplier and
competence partner



WHAT MAKES US UNIQUE

Image 1: Codico Holding,
Perchtoldsdorf,
grating

Image 2: Praterstern Polizei,
Vienna, expanded metal



WHO ARE WE?

- Independent, private company from Austria
- Competent and experienced specialists in the metal sector



WHAT DO WE DO?

- Full service provider with special products for metal processing, industry and architecture
- Individual solutions, further machine processing, surface treatment, ready-to-install final products



WHY PROMETALL?

- Reliability & competent advice
- Broad range of products & fastest delivery in Austria
- Flexibility for custom-made products
- Help with planning & top quality at fair prices

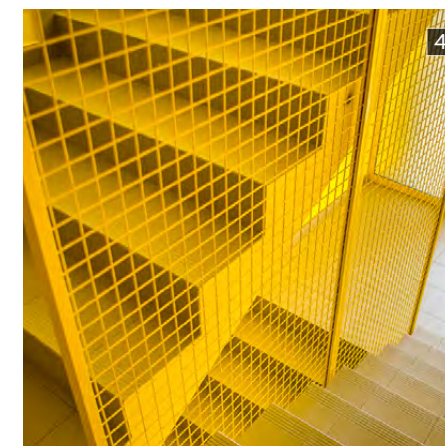
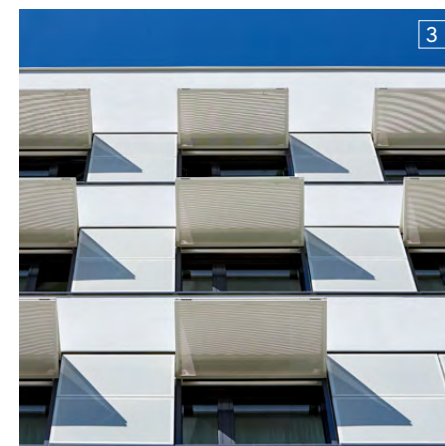


Image 3: LKH Leoben,
perforated metal sheet

Image 4: Stampena zgrada,
Zadar, wire mesh

✓ **Individuality is our guiding principle.** It is evident in the quality of our advice, on the one hand: you have a personal contact that is always here for you, on-site too.

✓ **On the other hand, in the implementation of your requirements:** individuality is our guiding principle. We implement your individual concepts with creativity and know-how. No matter how extravagant these concepts are.

✓ **We offer custom-made production for:** perforated metal sheets, expanded metals, wire mesh, profile edgings, gratings, embossed metal sheets, architectural wire mesh and alternative products. Our extensive range is complemented by standard products from Austria's largest warehouse stock. In top quality.

✓ **These are a lot of PROs. Individuality is our guiding principle.** They allow our success in the domestic and international markets to grow. And your company's success grows with it..

PROMETALL DESIGN INSTEAD OF AVERAGE

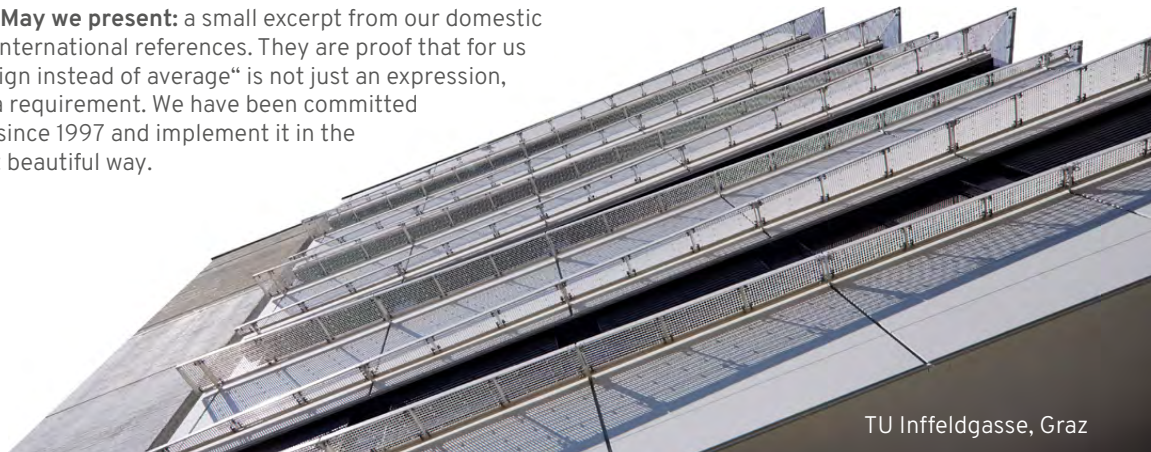
Front page: SV Hauptverband, Vienna,
perforated metal sheet
Left: Donauzentrum Vienna



WHAT WE DO



May we present: a small excerpt from our domestic and international references. They are proof that for us „Design instead of average“ is not just an expression, it is a requirement. We have been committed to it since 1997 and implement it in the most beautiful way.



TU Inffeldgasse, Graz



ProMetall
staircase railings,
profile edgings

Profile Edgings

Our profile edgings provide the materials with stability, reduce the risk of injury and convince with beautiful looks.

They can be processed simply, efficiently and therefore cost-effectively.

- Profile edgings for perforated metal sheets, expanded metals, crimp screens and spot-welded gratings
- in store and available for delivery at short notice in aluminium, stainless steel, polished stainless steel, galvanised steel, bright steel

Gratings

SELF-SUPPORTING YET EXTREMELY DURABLE

Gratings are used as façade cladding and cover for stages, walkways, staircases, pedestals, treads and other openings. As a full service provider we supply gratings in any design.

Our range:

- Gratings/press-locked gratings steel made of High-Solid high-strength steel strip
- Press-locked gratings made of steel S235JR (St37)
- Press-locked gratings made of stainless steel
- Heavy-duty gratings
- Louvre gratings
- Perforated gratings
- Forge-welded gratings
- GRP plastic gratings
- Fence elements made of gratings

Surface designs:

- raw, hot-dip galvanised or pickled
- electro-polished or powder-coated

Supplementary products:

- Retaining brackets, angular frames, tread edges, skirting boards etc.

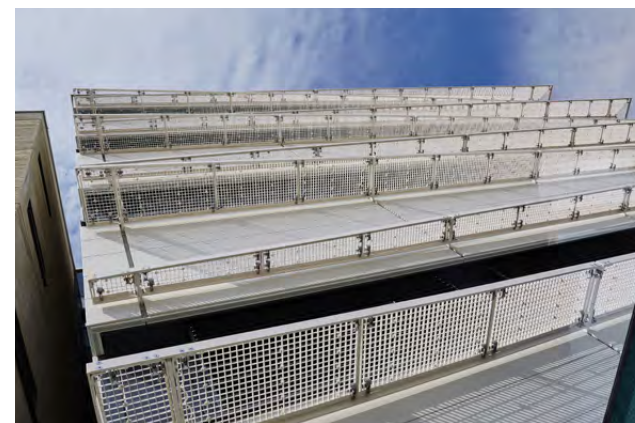
Delivery:

- Austria's fastest deliveries, e.g. for: Made-to-measure gratings (press-locked gratings) within 9-13 working days, depending on specification
- Made-to-measure stainless-steel gratings within 10-15 working days

SFU Campus Prater Freudplatz, Vienna



TU Inffeldgasse, Graz



Perforated metal sheets

A VISUAL REVOLUTION A FRESH BREEZE FOR FAÇADES

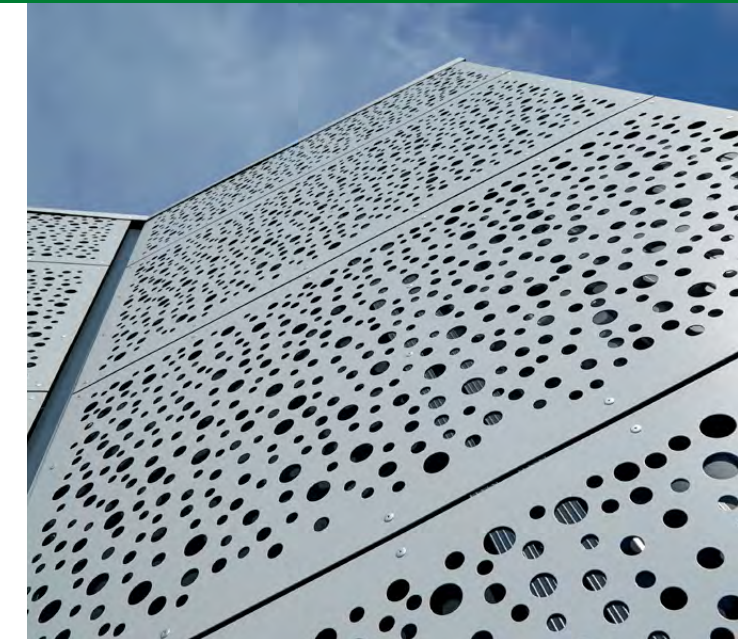
Perforated metal sheets offer new possibilities for façades. Visually as well as practically. Attractive protection against wind, weather and prying eyes, they allow sufficient air to reach the walls. Just ask us: we perforate metals to the limits of physics. Yet always with an eye on the DIN-tolerances.

Our range:

- 100% perforated metal sheets from one supplier
- Austria's largest warehouse stock
- Production from 1 unit special format with special perforation in special material
- Cutting service
- Edges
- Welding
- Surface finishing

Delivery:

- 500 standard items within 24-48 hours
- another 800 items within 3-8 working days
- Special stamping from 1 unit within 2-3 working days



Eurospar Zeltweg "Bubbles", perforated metal sheets



Terraced houses, Wolfsbrunn, perforated metal sheets



WHAT WE DO



REAL EYE CATCHERS AND MULTIFUNCTIONAL PERFORMERS

Expanded metals

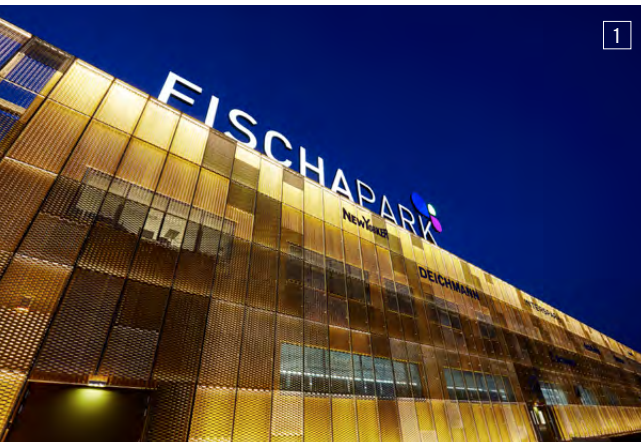


Image 1: SC Fischapark, Wiener Neustadt

VISUAL PROTECTION AND TRANSPARENCY ALL-IN-ONE

Expanded metals create glimpses and views. Depending on the perspective. Thanks to their three-dimensional character they score with high strength and surface stability. In contrast to perforated metal sheets there is no production waste. As a result, expanded metal is often the more cost-effective alternative. Trust Austria's no. 1 for expanded-metal facades.

Our range:

- Austria's largest warehouse stock
- available for delivery in all materials suitable for stamping such as steel, aluminium, stainless steel, copper, brass, bronze, zinc etc.
- in widths of up to 3200 mm
- with mesh from 0.5 to 800 mm

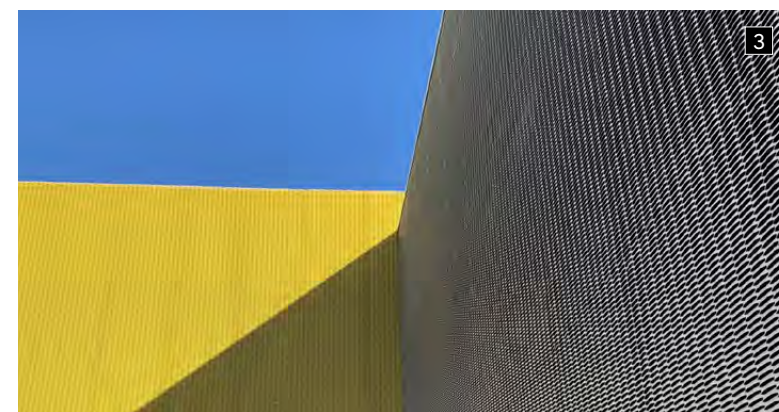
Products / Finishing:

- Frames, angular frames, special fixings for façades etc. (powder coating, anodisation, hot-dip galvanisation)

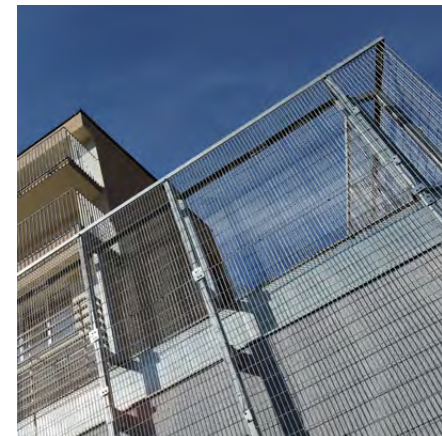
Delivery:

- on average 1 to 4 weeks, depending on quantity

Image 2: Multi-storey car park See-Hub, Vienna,
Image 3: Elementary school Bukovac, Zagreb



Alternative products



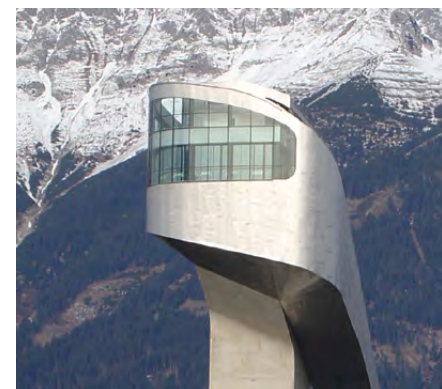
Aquí Hotel

WIRE MESH

Wire mesh is a real all-rounder. It is used for everything from antenna building to fence systems. As a specialist for **crimp screens** and **spot-welded gratings**, we offer the product in all popular materials and for all functions.

Our range:

- Designs in stainless steel and aluminium, bright steel, hot-dip galvanised steel, pre-galvanised
- aprox. 50 items crimp screen + approx. 130 items welded screens in stock and available for delivery at short notice
- Fine screens as reels individually galvanised steel + stainless steel; approx. 40 items in widths from 500 bis 2000 mm in stock and available for delivery at short notice



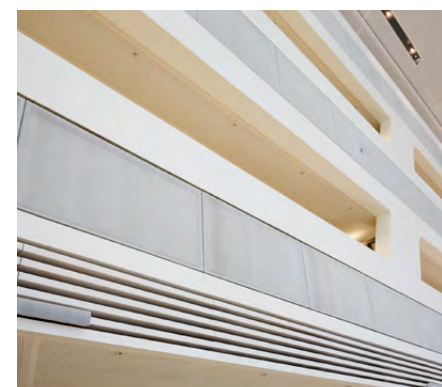
Bergisl

PATTERNED METAL SHEETS

They are known as „designer metal sheets“, „structured metal sheets“ or „architectural metal sheets“; as Austria's only full service provider we set new standards regarding competence and service in this segment.

Our range:

- Over 80 items available for delivery at short notice
- Cutting service
- Embossed surfaces
- Coloured surfaces (ColourTex®)
- Sanded surfaces (GranexTM)



University of Economics and
Business Campus Vienna, library

ARCHITECTURAL WIRE MESH

Wire mesh combines aesthetic and technical requirements in three dimensions.

Our range:

- Ceiling design
- Facade design
- Interior design
- Mounting systems



WHAT MAKES US PROUD

Image 1: Barmherzige Brüder Graz,
expanded metal

Image 2: Stiwa Holding,
Attnang Puchheim, grating

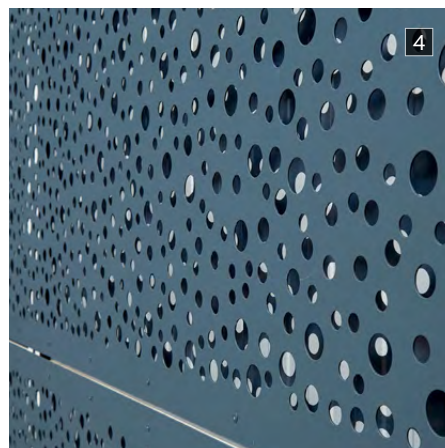
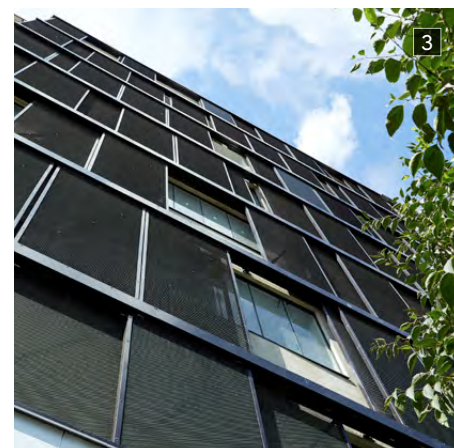
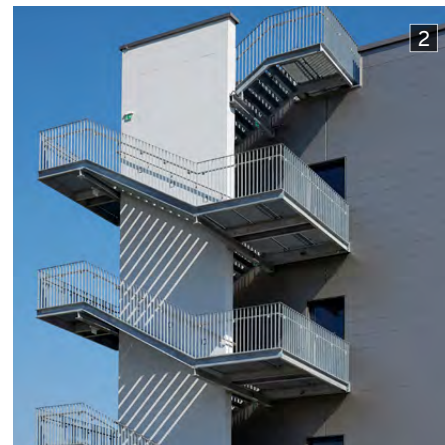
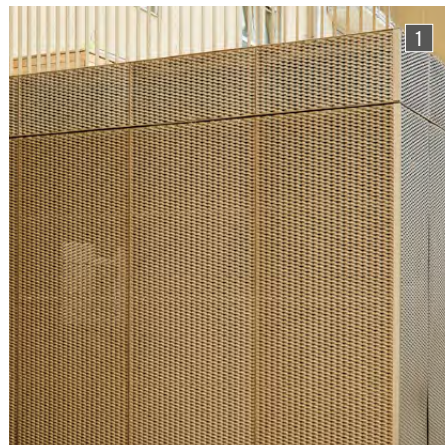


Image 3: Wiener Gürtelstraße,
Vienna, expanded metal

Image 4: Eurospar Zeltweg,
perforated, metal sheet

Image 5: Restaurant Shiki, Vienna,
architectural wire cloth

Image 6: Residential complex,
Schwechat, expanded metal

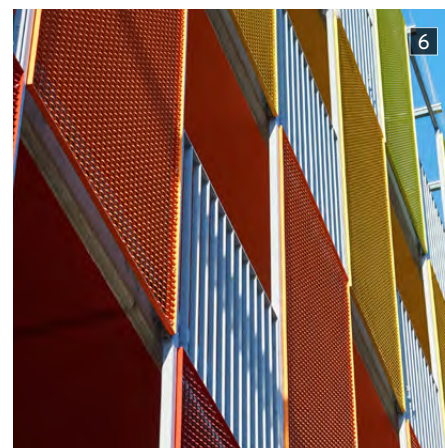
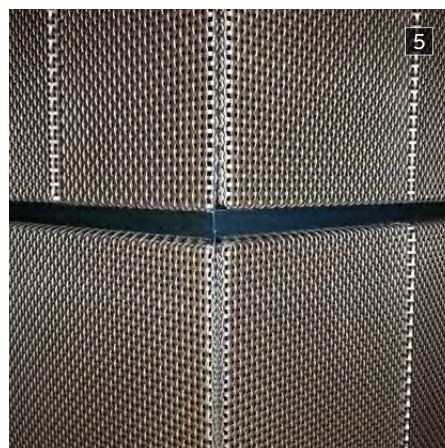
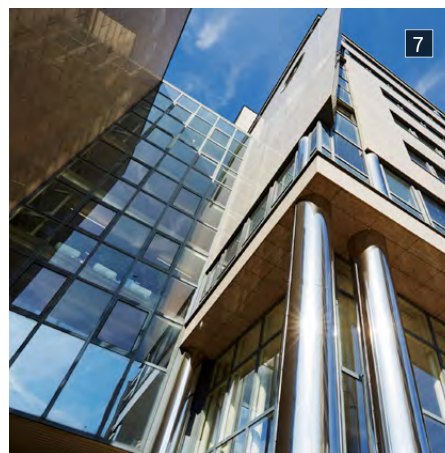


Image 7: Wienerbergerstraße,
Vienna, patterned metal sheet



Next page: Commercial object
"Trauner Kreuzung", Traun,
expanded metal



OUR PROS

✓ **ProMetall stands for individual design**
in accordance with clever concepts and state-of-the-art technology.
The result: exceptional, high-quality and durable.
An unrivalled PRO that has already convinced 2900 customers
in Austria and another 800 customers all over Europe,
from all metal-processing industries.
It makes us very happy to count you amongst them.



WHO WE ARE

EXPERIENCED, COMPETENT
AND ALWAYS HERE FOR YOU

Our employees have a wealth of experience,
expertise and always listen to your concerns.
Your personal contact will make the impossible possible.
Talk to us!



Thomas Häusler

Management / Architecture consulting

Thomas Haeusler has led his company since 1997.
With warmth. International. Successful.
As a reliable partner for suppliers and always
an inspiration for customers and employees.

+43 (0) 2256 62541 - 16
t.haeusler@prometall.at

TEAM EXPORT EUROPE



Zaneta Prohaska- Koberstein B.A.
Sales management

+43 (0) 2256 62541 - 10
z.prohaska@prometall.at



Doris Guttmann
Sales / customer service

+43 (0) 2256 62541 - 23
d.guttmann@prometall.at



Matthias Szabo B.Sc.
Technical director

+43 (0) 2256 62541 - 15
m.szabo@prometall.at



Liechtensteinklamm (gorge)
– “Helix” stairway, St. Johann
im Pongau, expanded metal

ProMetall GmbH

Ared Straße 36 (ARED-PARK)

A-2544 Leobersdorf

T: +43 2256 62541-0

sales@prometall-europe.com

www.prometall.at

Opening Hours

Mo – Thu : 07:30 AM – 4:30 PM

Fr : 07:30 AM – 2:00 PM